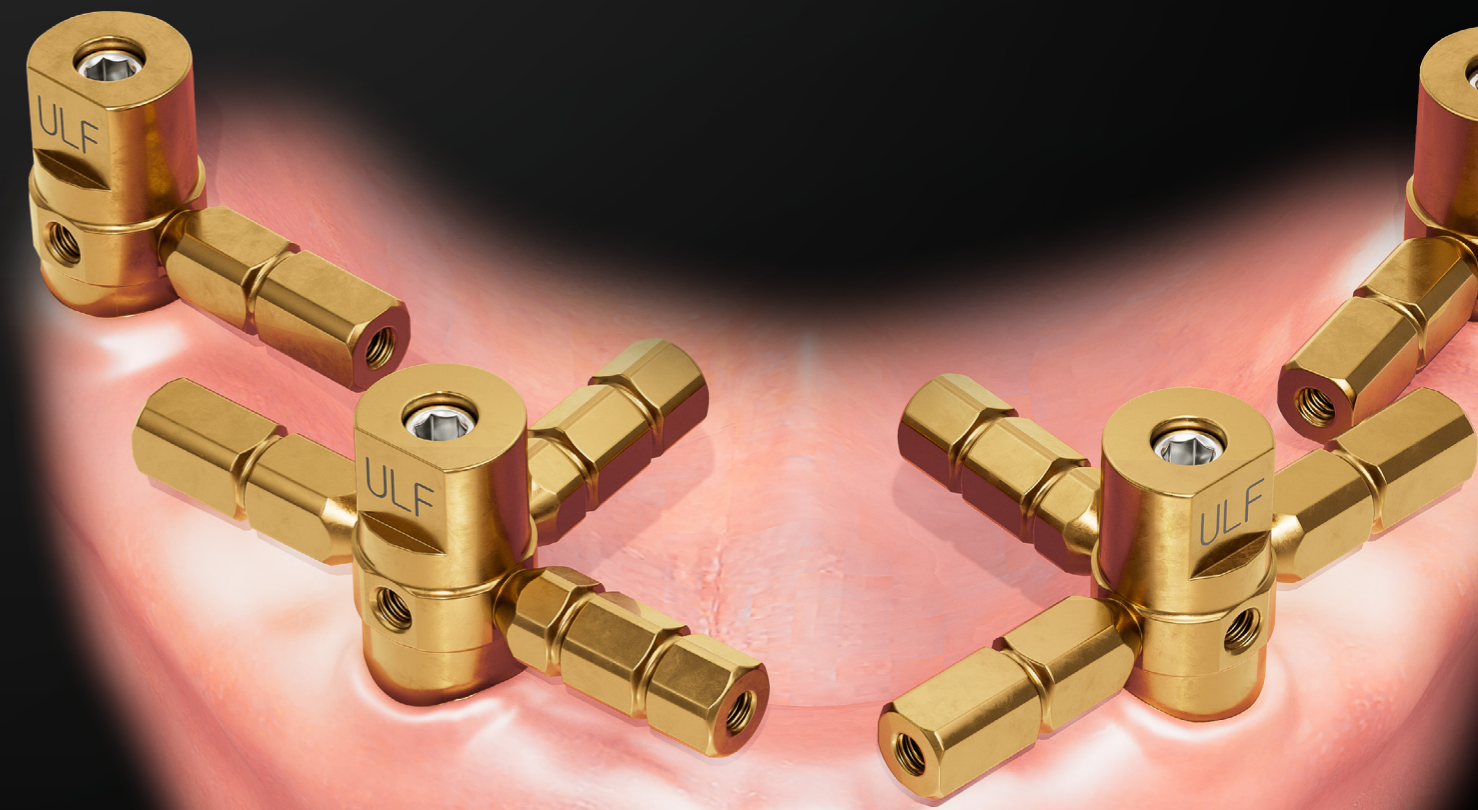



SCANBODY PRO


Your Partner in Precise Digital Impressions


www.dentisimplant.co.kr




DENTIS

 Tel. +82-1899-2804 | Fax. +82-53-583-2806
99, Seongseoseo-Ro, Dalseo-Gu, Daegu, Korea

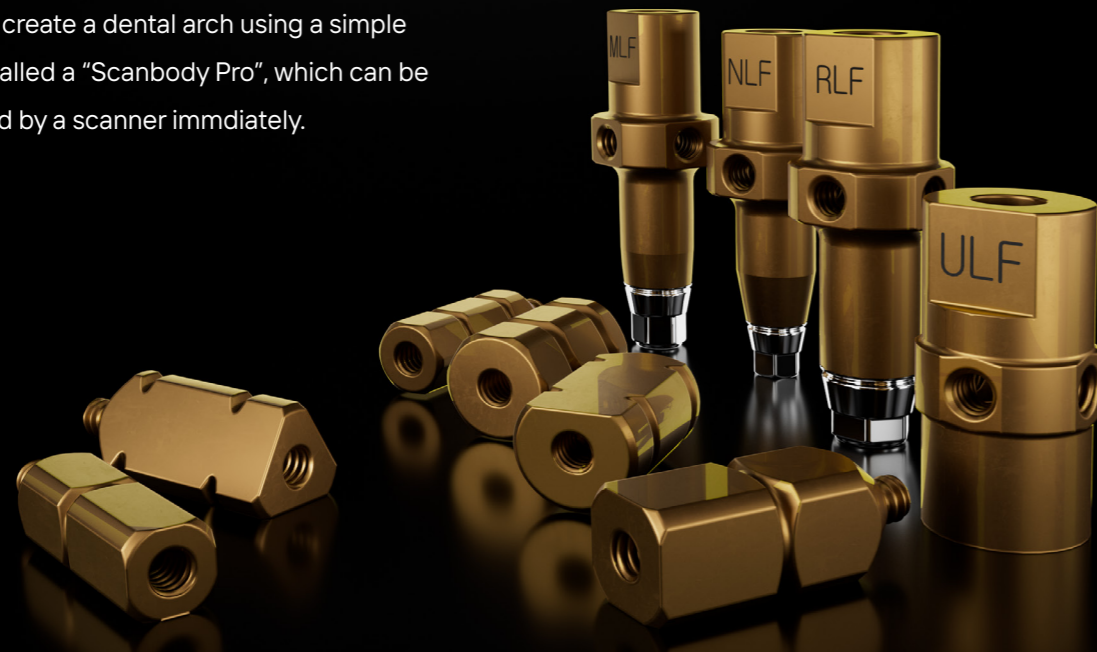
 Tel. +1-323-677-4363 | Fax. +1-323-677-4366
11095 Knott Ave. ABC, Cypress CA 90630

 Tel. +021-5111-3828 | Fax. +021-5111-3828
上海市长宁区中山西路933号2205室

 Tel. +34 91 072 62 27 | <https://dentiseurope.com/>
Travesía C. Doctor Fleming, 16

COPYRIGHT ©2024 DENTIS COLTD ALL RIGHTS RESERVED
Specifications are subject to change without notice.
Trademarks are the property of DENTIS Co., Ltd. Or their respective owners.

Dentis has developed a convenient product that can easily create a dental arch using a simple fastener called a "Scanbody Pro", which can be recognized by a scanner immediately.



Convenient solutions for All on X

Specification

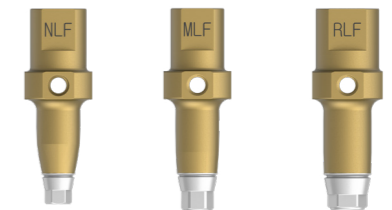
MU ScanBody

Diameter	Length	Code
Ø4.5	10mm	DSMUSBLFS



S-Clean ScanBody

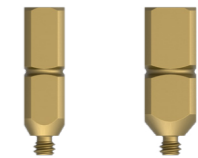
Diameter	Length	Code
Ø4.0(Narrow)	12mm	DSSBNLFS
Ø3.8(Mini)	12mm	DSSBMLFS
Ø4.5(Regular)	12mm	DSSBRLFS



Scanbody Screw Pin

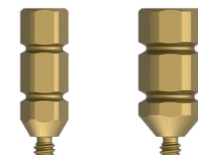
Square

Diameter	Length	Code
Ø3.0	8mm	DSSBSBQ
Ø4.0	8mm	DSSBSBQ4



Hex

Diameter	Length	Code
Ø3.0	8mm	DSSBSBH
Ø4.0	8mm	DSSBSBH4



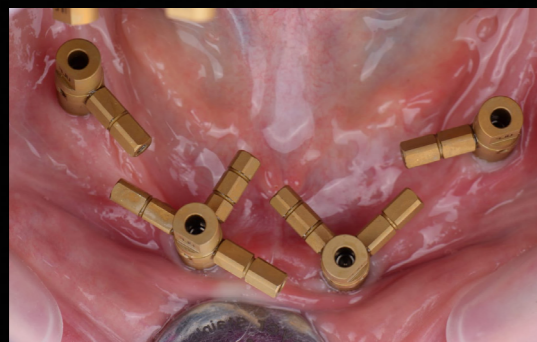
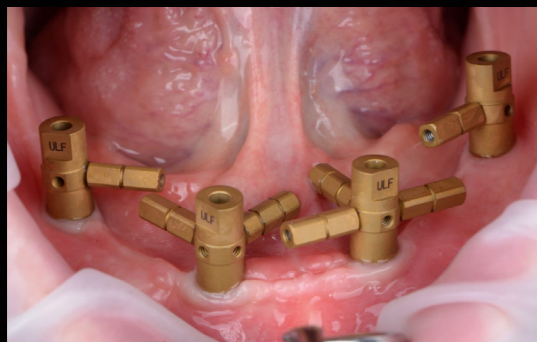
Semi-Circle

Diameter	Length	Code
Ø4.0	8mm	DSSSBC4



Triangle

Diameter	Length	Code
Ø4.0	8mm	DSSSBT4



* Clinical case presented by
Dr. Marcu Cristian, Romania



* Clinical case presented by
Dr. Sameh Shaaban, Egypt